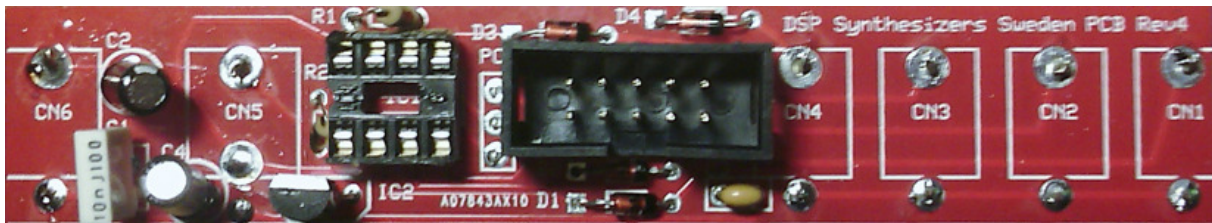
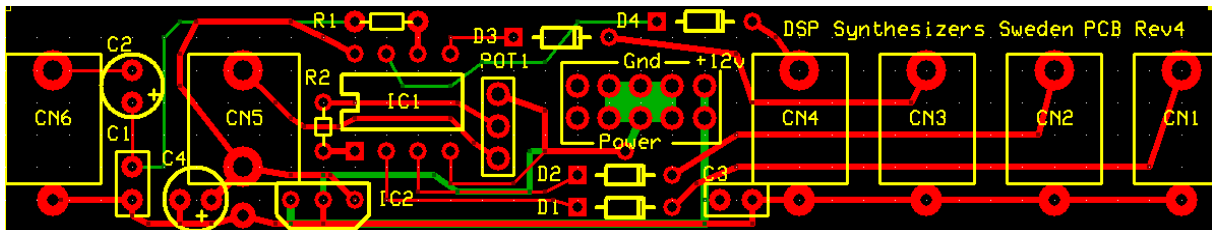
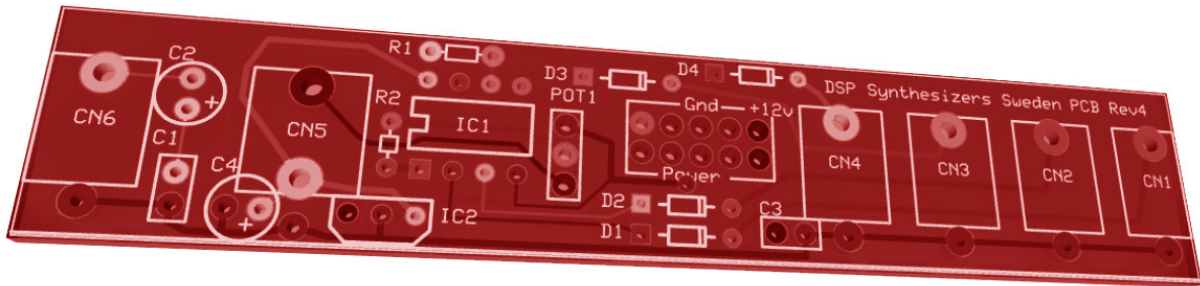


PCB REV4



BOM:

IC1: Drum chip

IC2: 78L05

R1: 1Kohm

R2: 22Kohm

C1: 10nF

C2,C4: 10uF

C3: 100nF (Optional)

D1-D4: 1N4148

POT1: 10K Lin

CN1-CN6 Thonkiconn jacks

Power: 10-pin IDC