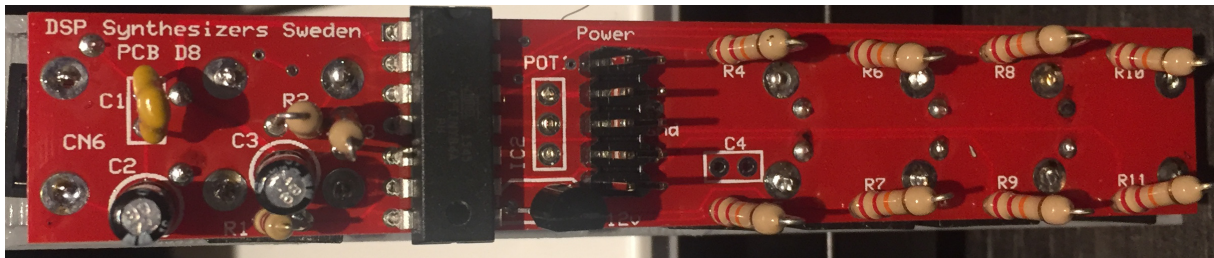
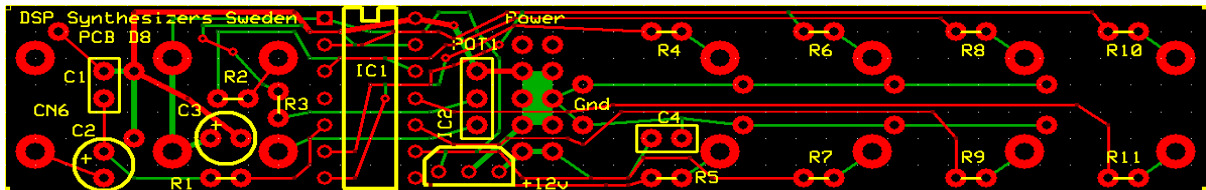
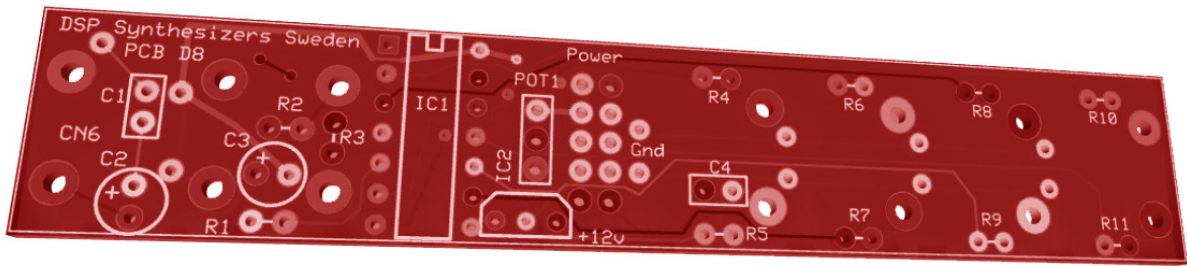


PCB D8



BOM:

IC1: Drum chip

IC2: 78L05

R1: 1Kohm

R2-R11: 22Kohm (optionaly 1N4148 diodes)

C1: 10nF

C2,C3: 10uF

C4: 100nF (Optional)

POT1: 10K Lin

CN1-CN11 Thonkiconn jacks

Power: 10-pin IDC